

SATURDAY, DECEMBER 16, 2006 1

THE ARIZONA REPUBLIC

Phoenix

NORTHEAST PHOENIX • SUNNYSLOPE
BILTMORE • EAST PHOENIX

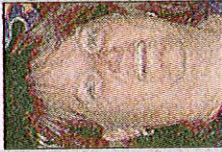
Phoenix City Manager Frank Fairbanks has tapped **JoAnn Del-Colle** as the city's Family Advocacy Center director. Previously, Del-Colle worked in the governor's office for children, youth and families as the director of the division of women. She worked on several women's issues like domestic and sexual violence and promoting women's health initiatives. Del-Colle also served as manager of the victim's services division of Scottsdale's city attorney's department. Also, she worked in the Phoenix Police Department Communications Bureau.



Sue K. Hanauer, vice president for Patient Care Services at John C. Lincoln North Mountain Hospital, has been elected to the governing council for the Magnet Recognition Program. As vice president for Patient Care Services, Hanauer works in all aspects of nursing services, focusing on quality and safety of care, financial management, and nurse/physician retention and recruitment. The Magnet program internationally recognizes facilities in the excellence of nursing care.



Lynn Walsh is the new director of operations for the Children's Museum of Phoenix. Previously, Walsh was with Mayo Clinic Scottsdale coordinating a \$1.5 billion billing project, and also worked at Cold Stone Creamery as an area manager, overseeing the management of several stores in Phoenix, Tucson and Sierra Vista. Walsh has bachelor's and master's degrees from Arizona State University.



KTAR has hired sports talk program director **Ryan Hatch** to lead the on-air team for Sports on 620-AM. Beginning next month, the station will have sports-only programming while its sister station 92.3 FM will focus on news and talks-show programs.



LOCAL PEOPLE